



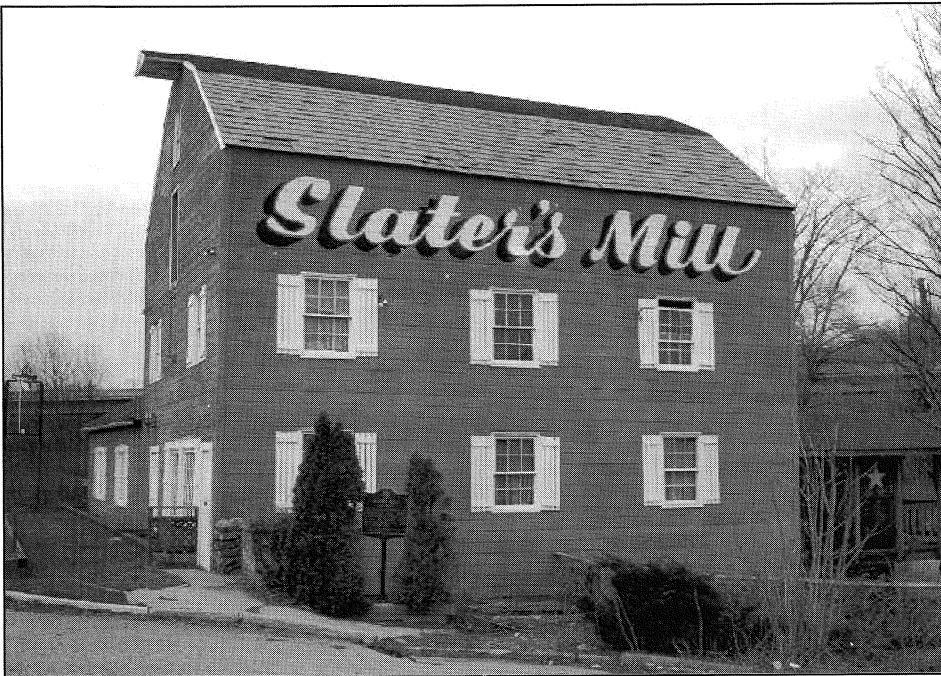
The Heritage Review

The Newsletter of the
Morris County Heritage Commission

VOL. 29, NO. 2

Summer 2007

Morris County's Ten Most Endangered Historic Sites



Slater's Mill, Riverdale. This 1857 structure is at risk from lack of maintenance, illegal dumping, and vandalism.

The Morris County Heritage Commission, The Morris County Historical Society, The Morris County Trust for Historic Preservation and The Morris County Visitors Center announce the 2007 Ten Most Endangered Historic Sites in Morris County. Fourteen applications were received this year for consideration; one structure was lost before the applications could be considered. The 2006 list resulted in two losses to development: Chatham's Lum-Skeele House and Dover's Old Dover High. Two 2006 nominations will continue to be watched: Countywide Teardowns and

Morristown National Historical Park in Morristown, Harding Township, Mendham Township, and Morris Township. Only one element from a 2006 nomination can be counted as saved: the Mt. Hope Miner's Church in Rockaway Township's Mt. Hope Mining District (although the overall district remains on the list).

The list of Ten Most Endangered Historic Sites in Morris County draws attention to the value of our county's historic resources and encourages public and private involvement in their maintenance, preservation, and interpretation. The Category of the

Year listing was introduced to define a broad category of historic resources that are endangered and under pressure as a group. With commercial and residential development rapidly altering municipalities across the county regardless of historic designation, this year's Endangered Category of the Year is "Redevelopment."

Category of the Year – Countywide Redevelopment

Redevelopment refers to the process of demolishing existing structures and constructing new buildings on the same site. Once used almost exclusively in urban areas, redevelopment is now being employed by suburban municipalities to convert "blighted" areas into ratable-producing commercial and residential properties. While municipal redevelopments do not override state or federal protections of historic or environmental resources, there are many situations where these restrictions do not apply. Although best practices and NJ Smart Growth guidelines encourage and incorporate historic resources within redevelopment projects, Morris County is losing historic buildings and neighborhoods to redevelopment at an alarmingly rapid rate. Three municipalities (listed below) that made the list in 2007 represent the threats faced county-wide.

Dover – Bassett Highway Redevelopment Area

Bassett Highway was built over a
(see *Endangered Sites* on page 4)